

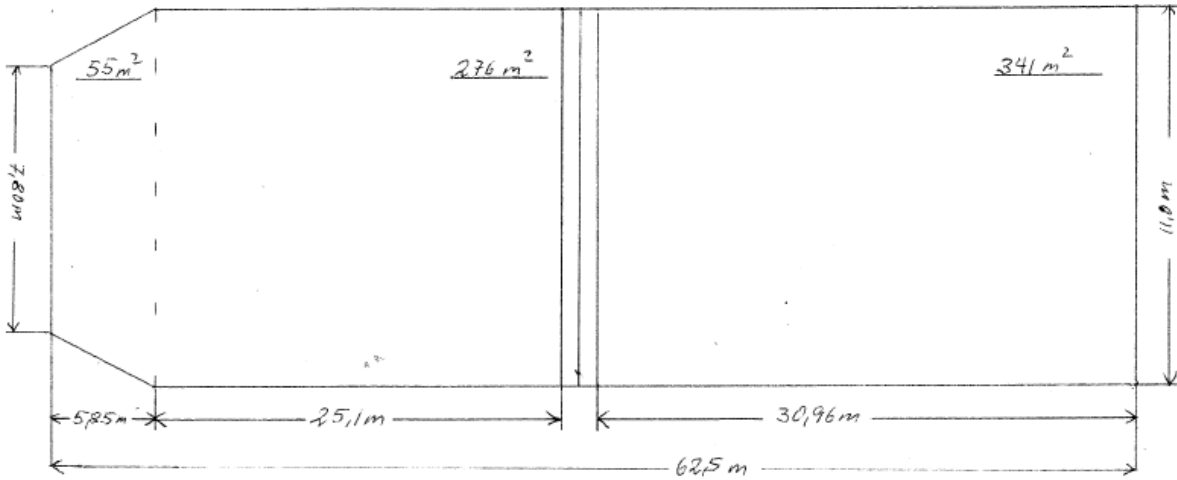
MV NORVAAG

IMO NO 9135743

CALL SIGN	LAPD8
FLAG / HOMEPORT	NIS/FLORO
YEAR BUILT	1997
Type	Bulk Carrier / gen. Cargo
Classification	RINA
MMSI	257 870 000
DWCC S/W	4000/3900
CBFT G/B	201929,45
GT/NT	2844/1568
LOA	89,77
Beam, breadth extreme	13,17
Draft fully laden S/W	5,57 / 5,69
Hatch dimensions	62,83 x 11,35
Hold dimensions	62,48 x 11
Moveable bulkheads	2
Owners	
Operators	Strand Shipping
P&I	GARD
Max load on tanktop, mt/sqm	18 mt/sqm
Main engine	1800
Cargo gir	
Boxed	Yes
Bow thruster	300
Phone	488 820 31 386
Fax	No
E-mail	norvaag@kopervikgroup.com
Inmarsat	425787010, 420948712



Maße Luke FRI LANGESUND



Hold total = 672 m²

Hold Total = 5718 m³

Hold with bulkheads = 5666 m³

cbf = m³ x 35,31

PRINCIPAL PARTICULARS

LENGTH OVER ALL	8977 m
LENGTH BETWEEN PERPENDICULARS	8478 m
BREADTH MOULDED	1511 m
DEPTH TO PARALLEL	7,5 m
DRAUGHT	5,6 m
DISPLACEMENT	42183 T
CAPACITIES: HOLD	33978
FUEL OIL	33978
BALLASTWATER	33978
FRESH WATER	42183
CRUDE OIL	3678
DEFINERS: IN HOLD	197 TCU
IN DECK	197 TCU
TOTAL	394 TCU
NET CLASS	C
SPEED 100% HPD MAX DRAUGHT	22,5 KN
GROSS TONNAGE	33978

DAVID BROWN & CO. LTD. ROOZEVAARD

Scheepswerf 17
 PO BOX 79 8600 AA ROOZEVAARD - HOLLAND
 Tel: 0508-200000 Fax: 0508-200001

NO. 0740 - 001