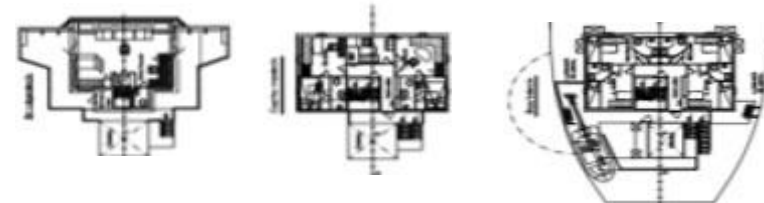
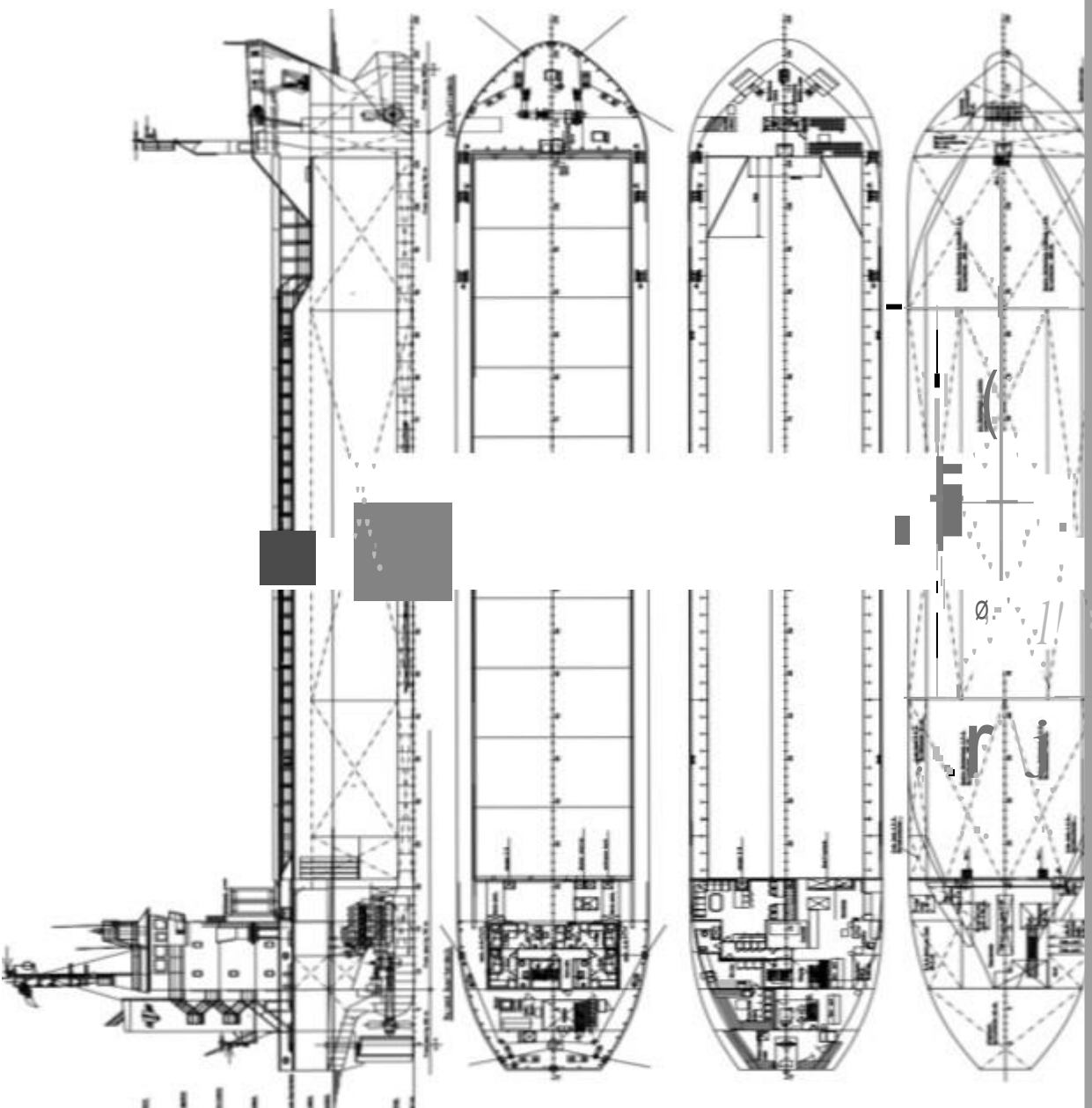


MV Feed Helgeland

IMO-number	9163635
CALL SIGN	LAHD8
FLAG / HOMEPORT	NORWAY
YEAR BUILT	1999
Type	Bulk Carrier
Classification	
MMSI	257066860
DWCC S/W	4700t / 4550t
CBFT G/B	194528
GT/NT	2829t / 1548t
LOA	89,75 m
Beam	13,6 m
Draft fully laden S/W	6,372 / 6,505 m
Hatch dimensions	62,88m/11,00m
Hold dimensions	62,88m/11,00m/8,35m
Moveable bulkheads	2
Operators	Strand Shipping
P&I	Hydor AS
Max load on tanktop	15 mt/m ²
Max load hatch	1,6 mt/m ²
Main engine	MaK 6M25 1800kw
Boxed	Yes
Bow thruster	Yes
Phone	+47 92 07 66 10
Fax	
E-mail	Feed.helgeland@haltenas.no
Inmarsat	





Principal particulars

Length overall	88.75 m
Length between perpendiculars	84.00 m
Depth moulded	13.00 m
Net tonnage	428 t
Gross tonnage	4 548 t
Registered tonnage	5 822 t
Substructure Capacity	32 t
Permissible Capacity	211 t
Displacement	1 839 t
Stowage capacity	1 833 t

IMO no. 1161232 Call Sign: L4058

NAME	SHIP
REG. NO.	
REG. OFF.	
REG. DATE	
REG. EXPIRES	
REG. AUTHORITY	
REG. STATUS	
REG. TYPE	
REG. CLASS	
REG. CATEGORY	
REG. SUB-CATEGORY	
REG. NOTES	